

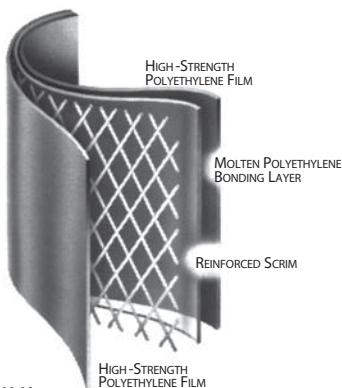
DURA•SKRIM® 8BV & 12BV

Meets GRI-GM22 Standard Specification

RAVEN
INDUSTRIES

Product Description

DURA•SKRIM® 8BV and 12BV consist of two sheets of high-strength virgin polyethylene film laminated together with a third layer of molten polyethylene. The black outer layers contain carbon black to enhance outdoor life. A heavy scrim reinforcement placed between these plies greatly enhances tear resistance and increases service life. DURA•SKRIM's heavy-duty diamond reinforcement responds to tears immediately by surrounding and stopping the tear.



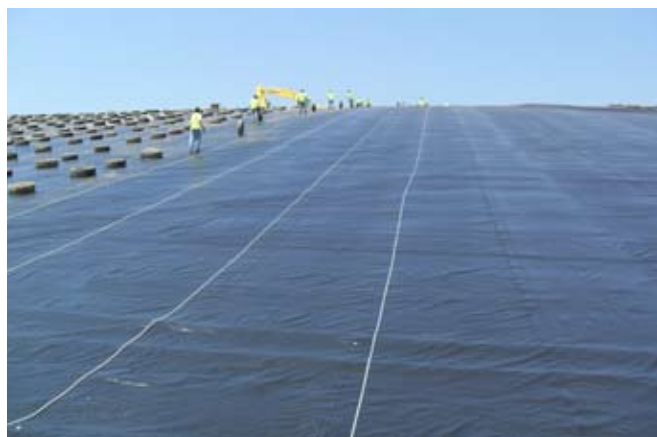
Product Use

DURA•SKRIM 8BV and 12BV are used in more demanding applications requiring high tear resistance. They are designed to withstand longer term outdoor applications requiring up to 5 years of exposure or more depending upon geographical location.

DURA•SKRIM 8BV and 12BV are designed to meet the requirements of the Geosynthetics Research Institute; GRI-GM22 Standard Specification.

Size & Packaging

DURA•SKRIM 8BV and 12BV are available in a variety of widths and panels up to 100,000 square feet. All panels are accordion folded and tightly rolled on a heavy-duty core for ease of handling and time-saving installation.



Temporary Rain Shed Cover

Product	Part #
DURA•SKRIM	R8BV
DURA•SKRIM	R12BV

APPLICATIONS

Daily Landfill Covers	Remediation Covers or Liners
Interim Landfill Covers	Cargo Coverings
Temporary Rainshed Covers	Outdoor Covers

PROPERTIES	TEST METHOD	DURA-SKRIM 8BV		DURA-SKRIM 12BV	
		Imperial	Metric	Imperial	Metric
APPEARANCE		Black/Black		Black/Black	
THICKNESS, NOMINAL		8 mil	0.20 mm	12 mil	0.30 mm
WEIGHT		38 lbs/MSF 5.5 oz./yd ²	185 g/m ²	58 lbs/MSF 8.4 oz./yd ²	283 g/m ²
CONSTRUCTION		Extrusion laminated with scrim reinforcement			
*TENSILE STRENGTH lbf/in. (N/cm)	ASTM D7003	60 lbf	105 N	64 lbf	112 N
*ELONGATION AT BREAK	ASTM D7003	600%	600%	650%	650%
*GRAB TENSILE	ASTM D7004	80 lbf	356 N	100 lbf	445 N
**TONGUE TEAR	ASTM D5884	30 lbf	133 N	40 lbf	178 N
CBR PUNCTURE RESISTANCE	ASTM D6241	240 lbf	1068 N	290 lbf	1290 N
MULLEN BURST	ASTM D751	70 psi	482 kPa	100 psi	689 kPa
UV RESISTANCE (10,000 HR)	ASTM D882 / GRI-GM16	93% retained / no cracking		57% retained / no cracking	
HIGH PRESSURE OIT	ASTM D5885	>1000 min.		>1000 min.	
MAXIMUM USE TEMPERATURE		180°F	82°C	180°F	82°C
MINIMUM USE TEMPERATURE		-70°F	-57°C	-70°F	-57°C
PERMEABILITY					
WVTR	ASTM E96 Procedure B	0.030 g/100in ² /day	0.46 g/m ² /day	0.023 g/100in ² /day	0.35 g/m ² /day
PERMS grains/(ft ² ·hr·in·Hg) (g/(24hr·m ² ·mm Hg))	ASTM E96 Procedure B	0.066 Perms	(0.044) Perms	0.051 Perms	(0.034) Perms

*Tests are an average of diagonal directions.

**Tests are an average of MD and TD directions.



DURA-SKRIM® 8BV and 12BV are both four-layer reinforced extrusion laminates. The outer layers consist of a high-strength polyethylene film containing carbon black and UV and thermal stabilizers.

DURA-SKRIM® 8BV and 12BV are reinforced with a minimum of a 1000 denier scrim laid in a diagonal pattern spaced 3/8" apart with an additional machine direction scrim every 3" across the width.

Note: To the best of our knowledge, unless otherwise stated, these are typical property values and are intended as guides only, not as specification limits. Chemical resistance as well as other performance criteria is not implied or given and actual testing must be performed for applicability in specific applications and/or conditions. RAVEN INDUSTRIES MAKES NO WARRANTIES AS TO THE FITNESS FOR A SPECIFIC USE OR MERCHANTABILITY OF PRODUCTS REFERRED TO, no guarantee of satisfactory results from reliance upon contained information or recommendations and disclaims all liability for resulting loss or damage.